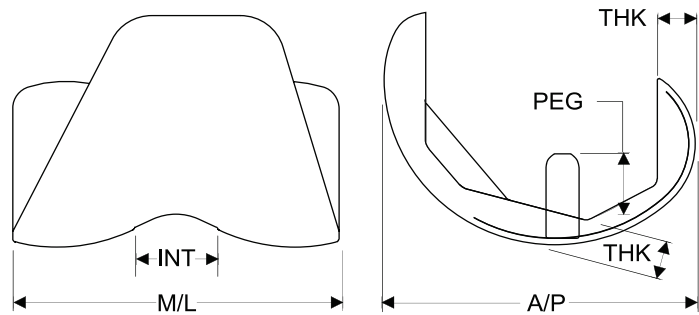


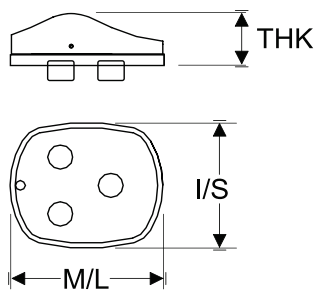
Implant Availability and Sizing

Femoral Component



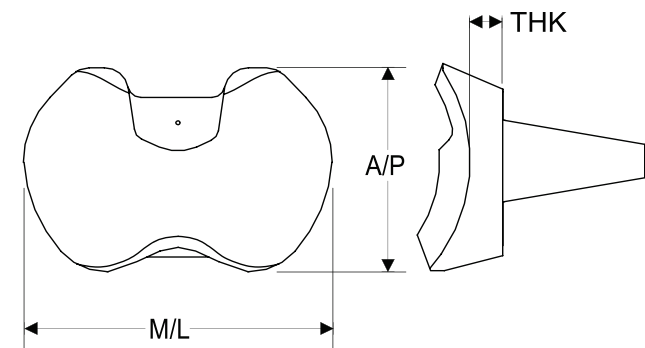
Size	A/P(mm)	M/L(mm)	INT(mm)	PEG(mm)	THK(mm)
1	53.0	56.8	15.2	9.5	6.5
2	57.0	60.0	16.4	10.2	7.0
3	61.4	64.6	17.6	11.0	7.5
4	66.1	69.6	19.0	11.8	8.1
5	71.2	74.9	20.4	12.7	8.7

Patellar Component



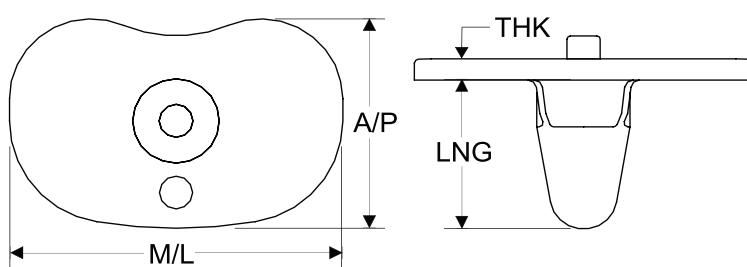
Size	I/S(mm)	M/L(mm)	THK(mm)
1	24.0	28.6	10.1
2	25.9	30.8	10.8
3	27.8	33.2	11.6
4	30.0	35.7	12.4
5	32.3	38.4	13.3

Mobile Bearing



Size	A/P(mm)	M/L(mm)	THK(mm)*	+2.5mm	+5.0mm	+7.5mm
1	33.9	55.1	6.0	8.5	11.0	13.5
2	36.5	59.3	6.3	8.8	11.3	13.8
3	39.3	63.9	6.9	9.4	11.9	14.4
4	42.4	68.7	7.4	9.9	12.4	14.9
5	45.6	74.0	8.1	10.6	13.1	15.6

Tibial Component

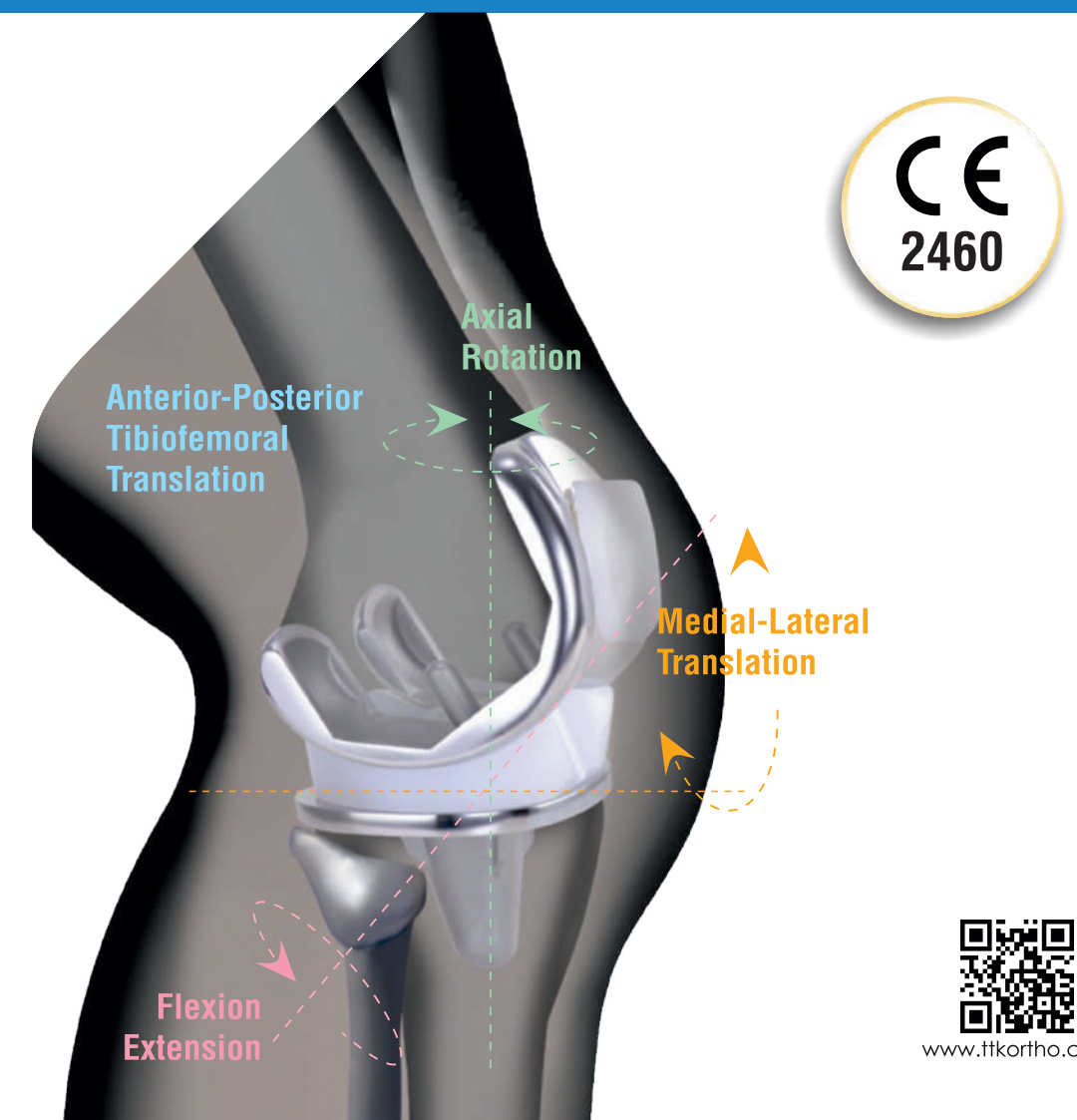


Size	A/P(mm)	M/L(mm)	THK(mm)	LNG(mm)
1	38.1	59.2	3.7	29.7
2	41.0	63.7	4.0	29.7
3	44.2	68.6	4.2	32.0
4	47.6	73.8	4.4	34.5
5	51.2	79.5	4.7	37.1

BUECHEL-PAPPAS™

HIGH FLEX TOTAL KNEE REPLACEMENT SYSTEM

Product Manual



BUECHEL-PAPPAS - Primary Knee System

- High Flex Design
- Ultra Congruent Deep Dish Design For Low Contact Stress (LCS)
- Mobile Bearing Platform
- Stop-pin in Tibia to prevent **Spin out**
- Stop-pin mechanism provides $\pm 45^\circ$ Axial Rotation which allows normal activity



Ultracoat® - TiN Coated

- 4th Generation New Jersey Knee
- Lighter, Stronger and Long Lasting
- Material: Titanium (Femur & Tibia)
- Material: UHMWPE (Bearing)
- **Ultracoat® - TiN** Coating @ Ionbond IHI Group, UK

Cobalt Chrome

- 3rd Generation New Jersey Knee
- Material: Cobalt Chromium (Femur & Tibia)
- Material: UHMWPE (Bearing)



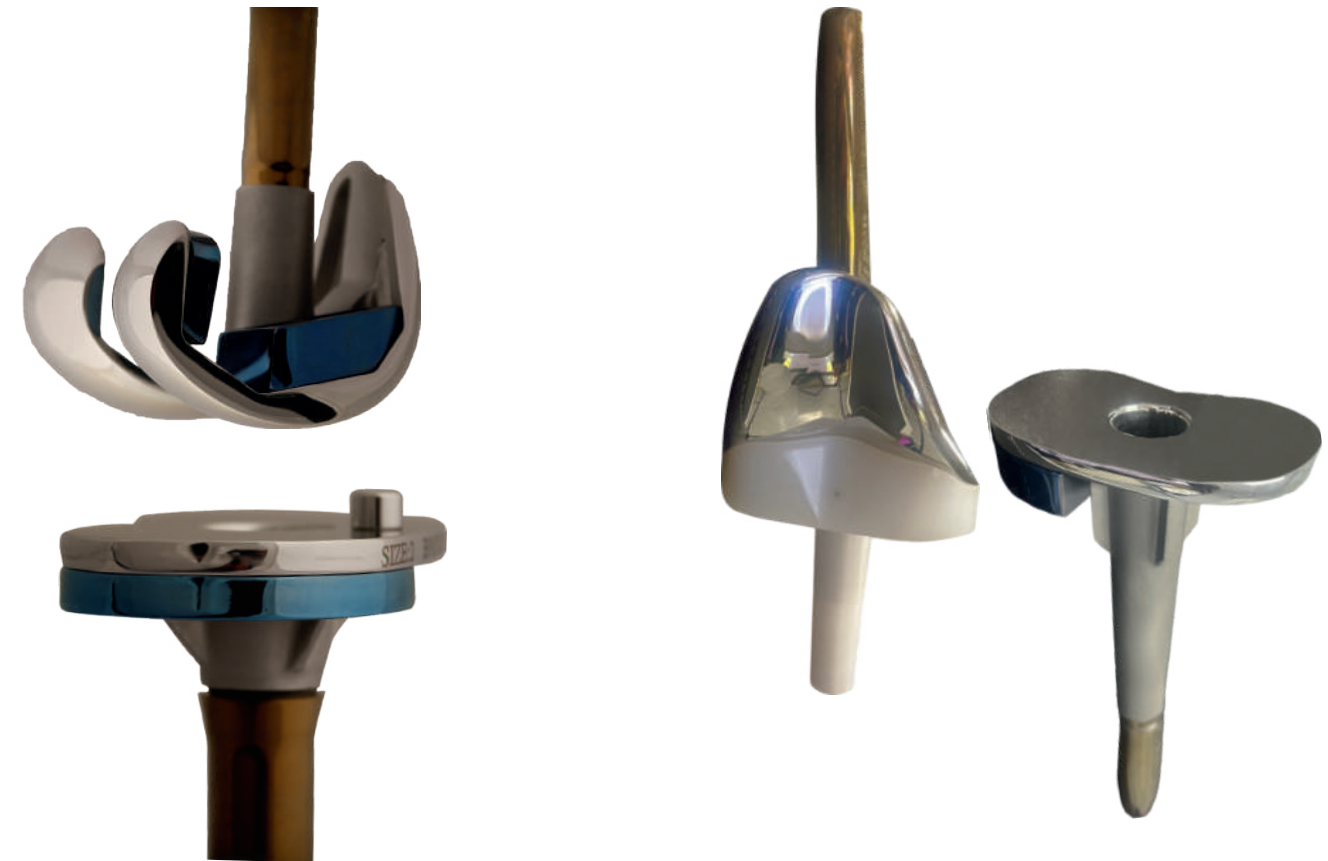
All Poly Tibial Component

- Medial Pivot High Flex Design
- Provides upto 20° Axial Movement
- Material: UHMWPE (Bearing)



BUECHEL-PAPPAS - Revision Knee System & Hinge Knee System

- Available: Distal Augments, Posterior & Tibial Wedges
- Modular screw and Adaptor options to attach stem extensions
- All Augments, Wedges, screw and Adaptor made of Titanium material



Sizes:

1, 2, 3, 4 & 5

Wedge Thickness:

5 mm, 10 mm & 15 mm



Sizes:

2, 3 & 4

Wedge Thickness:

5 mm & 10 mm

Stem Extension

Diameter:

10, 12, 14 & 16 mm

Length:

50 mm, 75 mm & 125 mm

